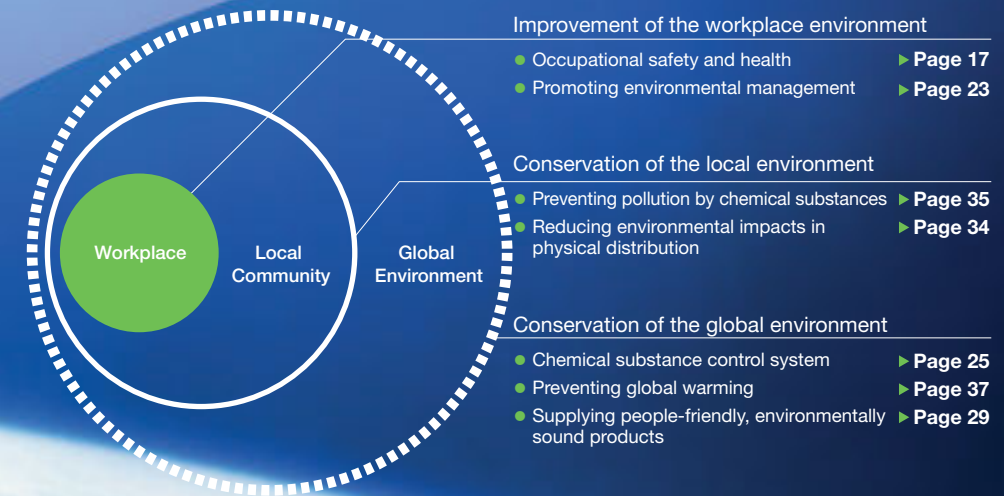


# For the Global Environment

This Beautiful Global Environment—  
Passing It On to the Next Generation

## Aspects of Environmental Conservation in the Workplace and the Community, from a Global Perspective

In order to attain sustainable social development, we must remember to protect the environments of our workplace, local communities, and the entire earth. By creating safe and healthy working conditions, our starting point for promoting environmental conservation, each of us will take to heart the issue of reducing environmental burdens and provide safety for local community residents in response to their trust in us. It is our duty to preserve the earth's invaluable environment and pass it on to the next generation.



## Different Pathways of Environmental Conservation—Focusing on the Entirety of Product Life Cycles

Environmental burdens on the earth are not only generated during the manufacturing process but throughout the entire product life cycle, including research and development, raw material procurement, logistics, and customer use.

To realize a sustainable society through products that are in harmony with the environment, we will promote Monozukuri (designing, manufacturing and repairing products) through efforts to reduce environmental burdens throughout a product's entire life cycle.

